

Installation

To install the iPORT software, download the **iPORT.exe** file from our Web site onto your hard drive. To install the iPORT application, simply double-click on the **iPORT.exe** file and follow the installation steps. The iPORT is compatible with Windows NT, 2000, and XP operating systems.

Overview

The iPORT is a COM port redirecting software for Windows NT, 2000, and XP. Its function is to redirect connections that are destined for a local serial (COM) port on a PC, to an iServer network-enabling device on the LAN. In a direct serial connection, application software can communicate directly over an RS232 or RS485 with a serial device (Fig. 1). By installing iPORT software on the same PC, the iPORT will redirect the serial connection from the COM port to the network port on that PC. The connection can simply reach the serial device through an iServer sitting anywhere on an Ethernet network (Fig. 2). This connection redirection is totally transparent to the serial device and its application software. Once the connection is up from the PC to the serial device, the data is transmitted across the Ethernet network to the serial device and back from the serial device to the PC, all through the iServer and the iPORT.

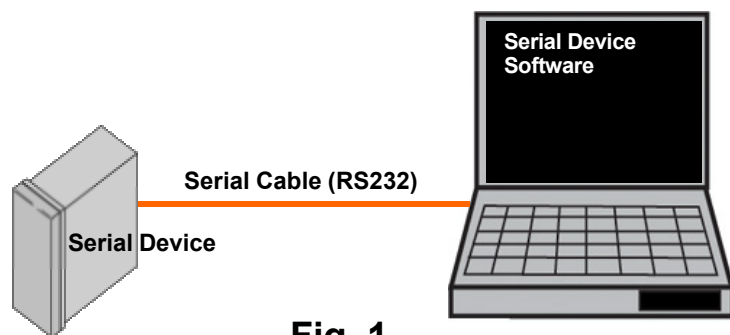


Fig. 1

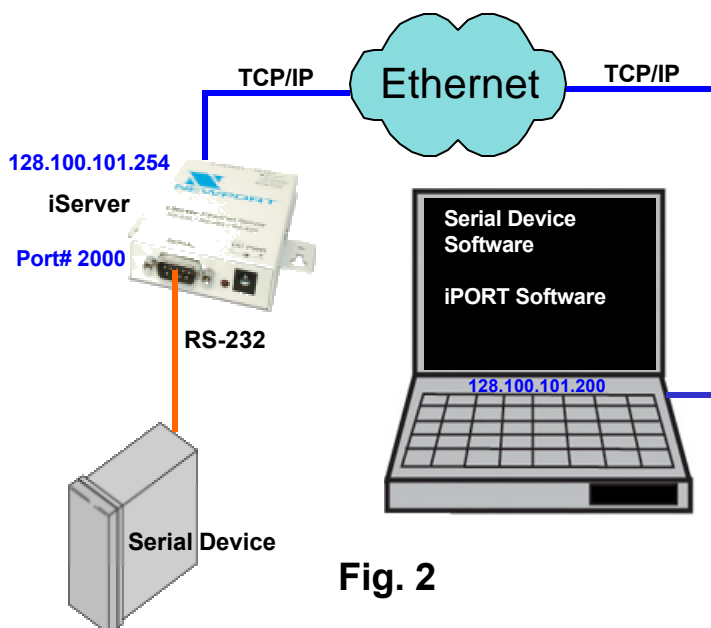


Fig. 2

Configurations

After the iPORT is successfully installed on your windows machine, you will have an iPORT icon on your desktop and Control Panel window. By double-clicking on this icon, you can start the application and the iPORT main window will appear on your screen (Fig. 3). Click on “COM Ports” button and you will see the window on Fig. 4. Select the appropriate COM port (this should be the same COM port that your application software uses). The selected COM port will then appear on the main iPORT window. By highlighting the selected COM port, you will be able to add the IP address and the port number to connect that COM port to the iServer on the network. Up to 255 COM ports can be selected and each can have a different IP configuration pointing to different iServers on the network. This enables users to simultaneously redirect different application software to connect to serial devices attached to networked iServers.

iServer IP Address – This is the IP address of the iServer that is connected to the serial device on one end and attached to the Ethernet LAN on the other end. The iServer's default IP address is 128.100.101.254, which can be changed to fit your network IP address range (see the iServer's manual for details).

iServer Port Number – This is the port number for the iServer's local serial port. The default value is 2000. If this port number is changed in the iServer's Configuration page (see the iServer's manual for details), the same number should be placed in the iPORT window.

Activate – If this box is checked, the selected COM port will be available for network connection. If it is unchecked, the selected COM port will be in sleep mode.

Timeout – This is the amount of time (in milliseconds) in which the iPORT keeps the application software waiting before the device response is arrived. The default value is 5 seconds and it can be set between 0 to 10 seconds.

Status – This window shows the connection status as the iPORT makes connection to the iServer or disconnects from the iServer. The connection status can be ideal, connecting, connected, or disconnected along with the IP address of the iServer shown in the Status window.

Apply button – To save the configuration for a selected COM port, click on the “Apply” button and reboot your PC for settings to take place in your Windows registry.

Clear button – This button deletes the settings for a selected COM port.

Cancel button – This button closes the iPORT window without saving the settings.

NOTE 1 In Fig. 4, if a COM port number is dimmed and cannot be selected, it means that the COM port is already used by another application or it could be a physical serial COM port on that PC.

NOTE 2 The serial communication settings (baud rate, data bit, stop bit and parity) of your application software must be identical to the serial communication settings of the iServer's serial port and your serial device's port connected to the iServer. You can use a Web browser to log into the iServer and configure its serial port's settings (see the iServer's manual for details).

Support

*If you need further technical assistance, please contact NEWPORT Electronics technical support team at **800-NEWPORT (800-639-7678)** or send us an email to iserver@newportus.com.*

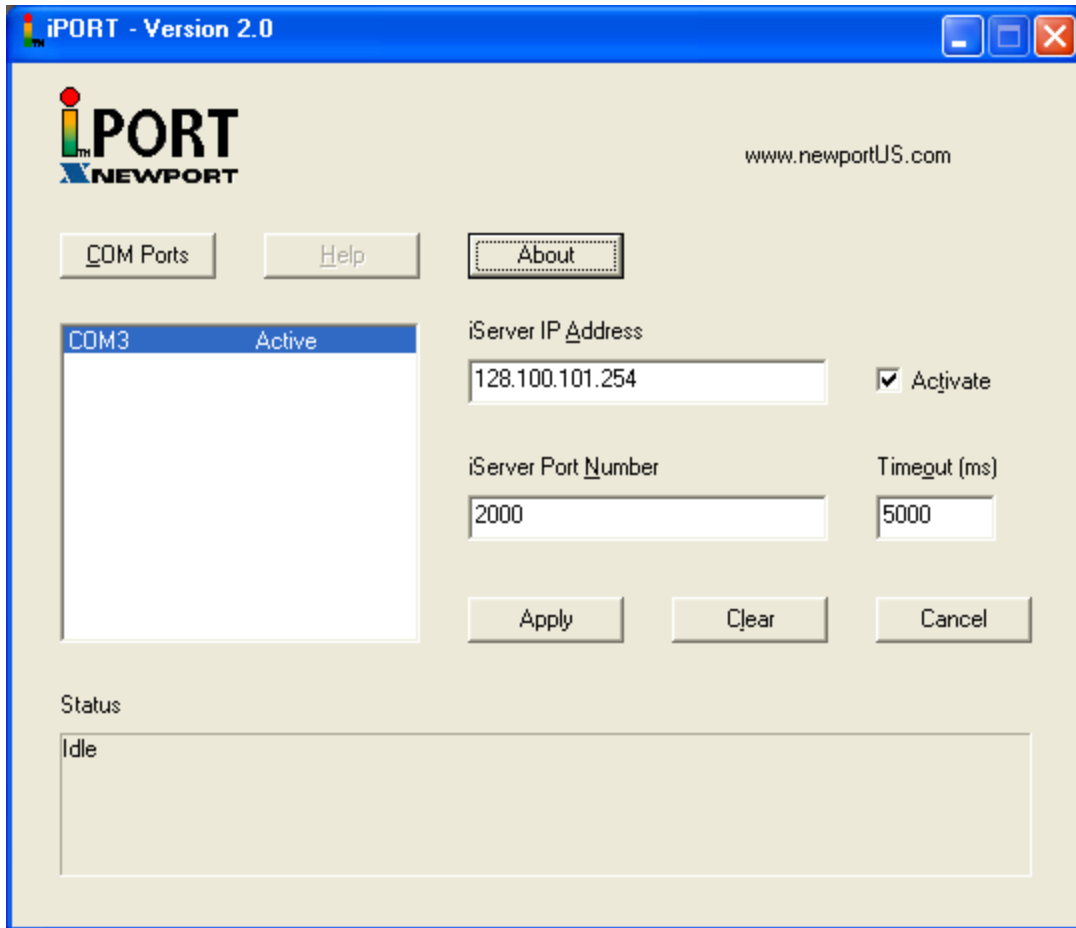


Fig. 3

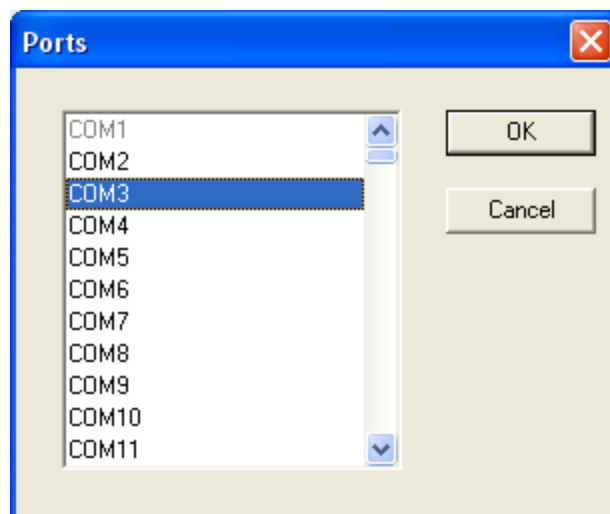


Fig. 4